



Create Value from Effective Supply Management

PerfectSourceSM

Perfect Commerce's PerfectSource suite is an On-Demand solution that supports best-in-class supply management, from RFx's to contracts to results. PerfectSource provides visibility and control to strategic decisions made before contracts are executed and enables new levels of supplier performance management. PerfectSource includes modules for event management, contract management, and supplier scorecarding. Begin with just one module and expand as needed.



Accelerating Spend Under Management...On-Demand

www.perfect.com

Event ManagerSM

Event Manager allows sourcing professionals to conduct competitive online events with their suppliers in real time, saving an average of 18% for both direct and indirect goods and services, while reducing cycle time up to 50%.

Flexibility from Auctions to RFx Events

Event Manager meets the diverse needs of sourcing organizations by offering a high degree of flexibility in event-creation and management. Whether you are conducting auctions or multistage RFx events, Event Manager will help maximize savings on a broad range of goods and services.

- Capture, save and reuse category or event-specific content via a template library.
- Establish price adjustments at the supplier, event, and line item level to account for factors such as payment terms or delivery.
- Leverage advanced weighting and scoring for complex events to ensure accurate post-award analysis.
- Formalize award decisions and communicate to suppliers with notifications.

Real-Time Interactive Bid Monitor

Event Manager provides an interactive, real-time bid monitor for auction events. Bid monitor enables sourcing professionals to observe how bids are trending, along with each bidder's competitive standing.

- Interactive supplier open bidding and overtime controls.
- Instant messaging and supplier connection monitoring.
- Automatic extensions for varying bidding scenarios.
- Multiple views including: Top, Most Recent, Current and All bids.
- Real-time event savings calculations.

Post-Event Analysis

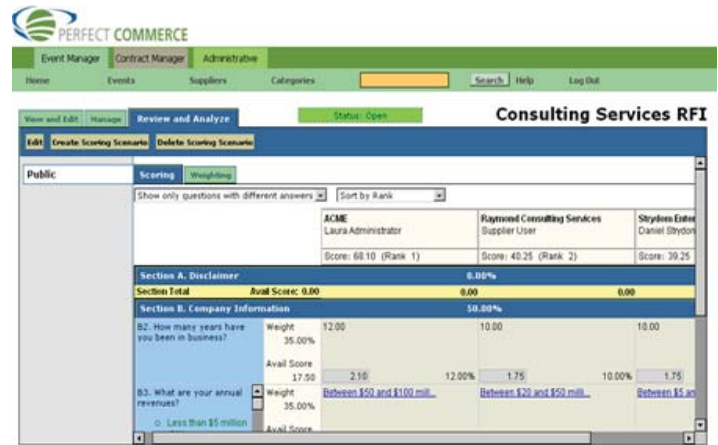
Making fast and informed decisions in complex sourcing situations is simplified using the event analysis tools. Post-event analysis allows sourcing professionals to review trends in supplier responses or analyze particular supplier bids.

- At-a-glance bid details for any event type.
- Side-by-side bid comparisons.
- Event detail and bid response export to Microsoft Excel.
- Real-time auction event savings calculations.
- Auction event replay.

Supplier Portal

Event Manager provides an easy-to-use portal that guides suppliers through the event response process by following step-by-step instructions. Suppliers assume responsibility for self-administration via the portal, lessening the strain on the buyer organization with minimal supplier training commitment.

- Complex bid response creation and management.
- Interactive bid weighting and scoring views.
- Competitive bid information with real-time bid adjustments.
- Minimal supplier training commitment.



Streamline your decision making process through advanced scoring models and automated side-by-side response comparison.

Contract Manager

Supply managers can cut contract negotiation cycle time in half and gain significant cost savings through improved management of supplier contracts. Compliance is enforced with business rules and approval workflow during the contract-creation process. Reduce contract creation time by up to 75% via templates and pre-approved clauses.

Full Contract Lifecycle Management

Contract Manager provides the tracking and management system necessary to optimize supplier relationships. Key stakeholders from across the organization can generate new contracts, access legacy contract information and monitor contract performance.

Automated Contract Creation

Contract Manager automates contract-creation reducing the inefficiencies found in the traditional contract-creation process. Through the use of intelligent templates and pre-approved clauses, authorized users can rapidly create new contracts or add amendments to existing contracts.

Streamlined Routing, Approval and Authorization

Once a contract has been created, Contract Manager's unique set of tools streamline the routing, modification and approval processes. These online collaboration tools help reduce the amount of time spent on the revision and approval process.

Centralized Contract Visibility

Contract Manager provides instant access and monitoring of contracts via a centralized repository. Users can access new and legacy contracts, search based on a variety of parameters, customize notifications and manage administrative functions.

Proactive Renewal Management

Contract Manager's proactive renewal management enables timely contract renewals via notification of expiring contracts. Contract

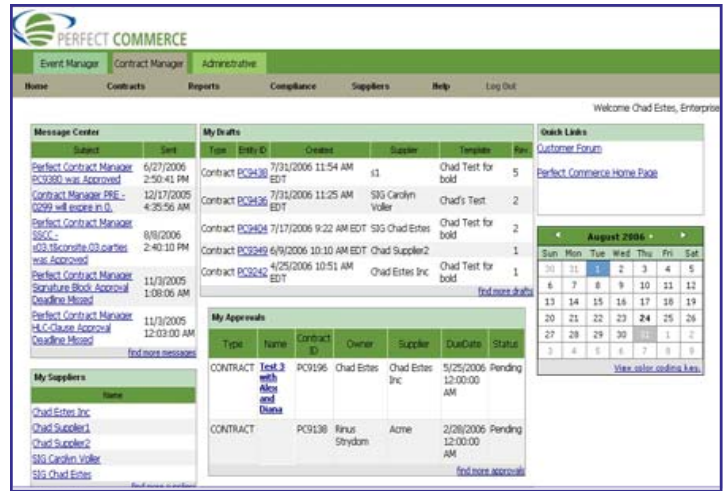
start and end dates are automatically highlighted and tracked, and expiration alerts ensure ample time is allotted for re-negotiation.

Flexible Reporting for Contract Analysis

Contract Manager’s flexible contract reporting allows users to create custom reports for contracts, clauses or templates based on any combination of fields available in the contract repository. Custom reports can be sent via email and then downloaded to Microsoft Excel for further analysis. Reports can be published for use by the entire organization or maintained as private reports.

Spend Monitoring for Contract Compliance

Contract Manager’s contract spend monitoring promotes compliance. Create custom threshold levels for contracts and track invoice spend against those contracts. Notifications are created when thresholds are met and contract statuses can also be used to identify those contracts approaching maximum levels of spend.



Centralize your contract management activities to enable full visibility, compliance and enhanced business intelligence

Scorecard Manager

Scorecard Manager provides a configurable, KPI (Key Performance Indicator)-driven framework that enables users to create a true closed-loop supplier performance measurement system. Scorecard Manager can be instantly accessed by key internal stakeholders or suppliers, and supports a wide range of review and update functions to accommodate a variety of implementation approaches. With flexible data-input modes and auto-generated graphical representations of performance, Scorecard Manager delivers a powerful set of tools that can significantly increase overall supply chain performance.

Supplier Performance Managed Through KPI's

Without objective, actionable information, many suppliers are hesitant to invest in performance improvement initiatives. Measurement is the key to continuous improvement and Scorecard Manager provides this measurement system. With point and click capability to define target performance levels and instant access to current performance, suppliers and supplier managers are able to focus on specific areas of opportunity in an objective and proactive manner.

Self-Service Supplier Access

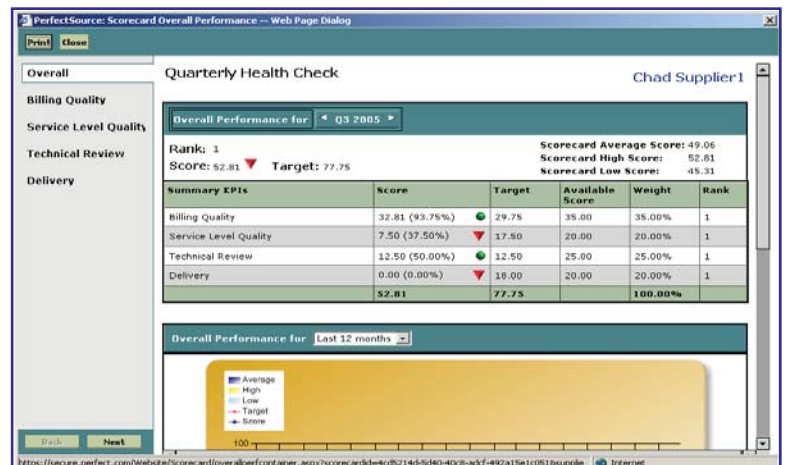
Based on access privileges set by the supplier manager, suppliers have instant access to view and update their scorecard data. Scorecard Manager enables suppliers to assist in the process. By enabling trading partners to self-update the information for which they are the best source, supplier managers can focus on the metrics best reported from internal sources and the overall management of the program.

User-Configurable Scorecard Definition

Supplier performance management is a continuous process. Scorecard Manager is designed to accommodate this ongoing change by being configurable. Scorecard definition is accomplished using simple forms rather than complex programming. This allows business users to set up and administer the system without requiring IT resources or consulting services.

Streamlined Results and Analysis

Utilizing world-class best practices, Perfect Commerce has designed a powerful analytical tool enabling supplier managers to easily analyze the performance of their trading partners. This tool is driven by four principles which include performance metrics, accommodation of multi-sourced data, flexibility and supplier involvement.



Manage supplier performance through custom KPI's and automated data analysis



Accelerating Spend Under Management...On-Demand

Services And Expertise Ensure Success

Perfect Commerce recognizes that technology is an enabler of world-class processes – not a solution in and of itself. Perfect Commerce Professional Services are available to immediately implement the highly functional Perfect Commerce solution suite and rapidly advance SRM initiatives. Perfect Commerce transforms supply management objectives into day-to-day business reality.

www.perfect.com



PerfectProcure
PerfectSource
PerfectPIM
The OSN



Create **Value** from Effective Supply Management

PerfectSourceSM

Perfect Commerce's PerfectSource suite is an On-Demand solution that supports best-in-class supply management, from RFx's to contracts to results. PerfectSource provides visibility and control to strategic decisions made before contracts are executed and enables new levels of supplier performance management. PerfectSource includes modules for event management, contract management, and supplier scorecarding. Begin with just one module and expand as needed.



Accelerating Spend Under Management...On-Demand

www.perfect.com